

# Plant Dissections

Ethan Cary

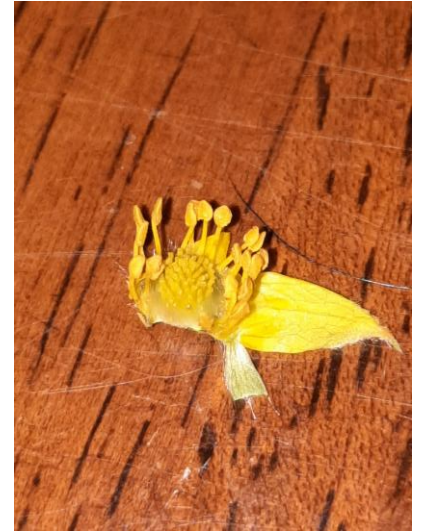
*Dasiphora fruticosa*



Two sets of five  
sepals



Five petals



Many stamens, some  
came off with the petals

*Delphinium glaucum*



Connate structure



Reproductive organs  
hidden behind petals

*Iris setosa*



Three outer petals



Three inner petals

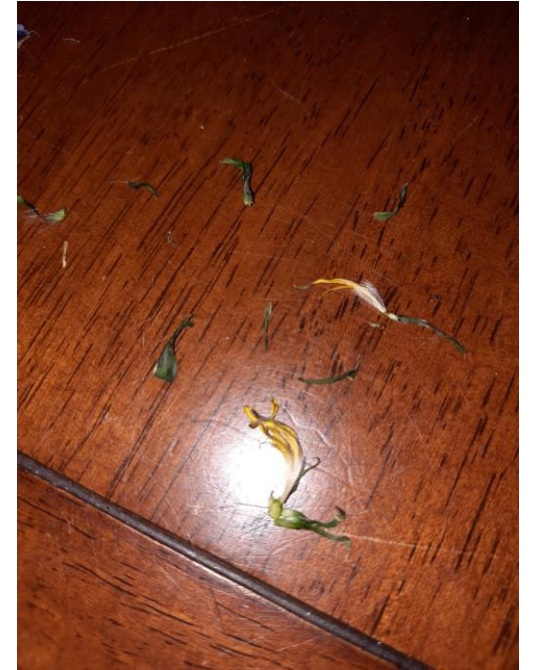


All petals  
removed, inferior  
ovary

*Taraxium officinale*



Sepals removed



Ten sepals