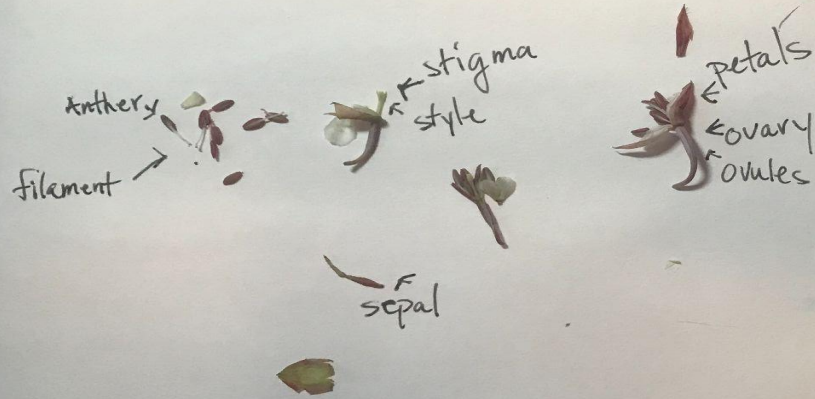
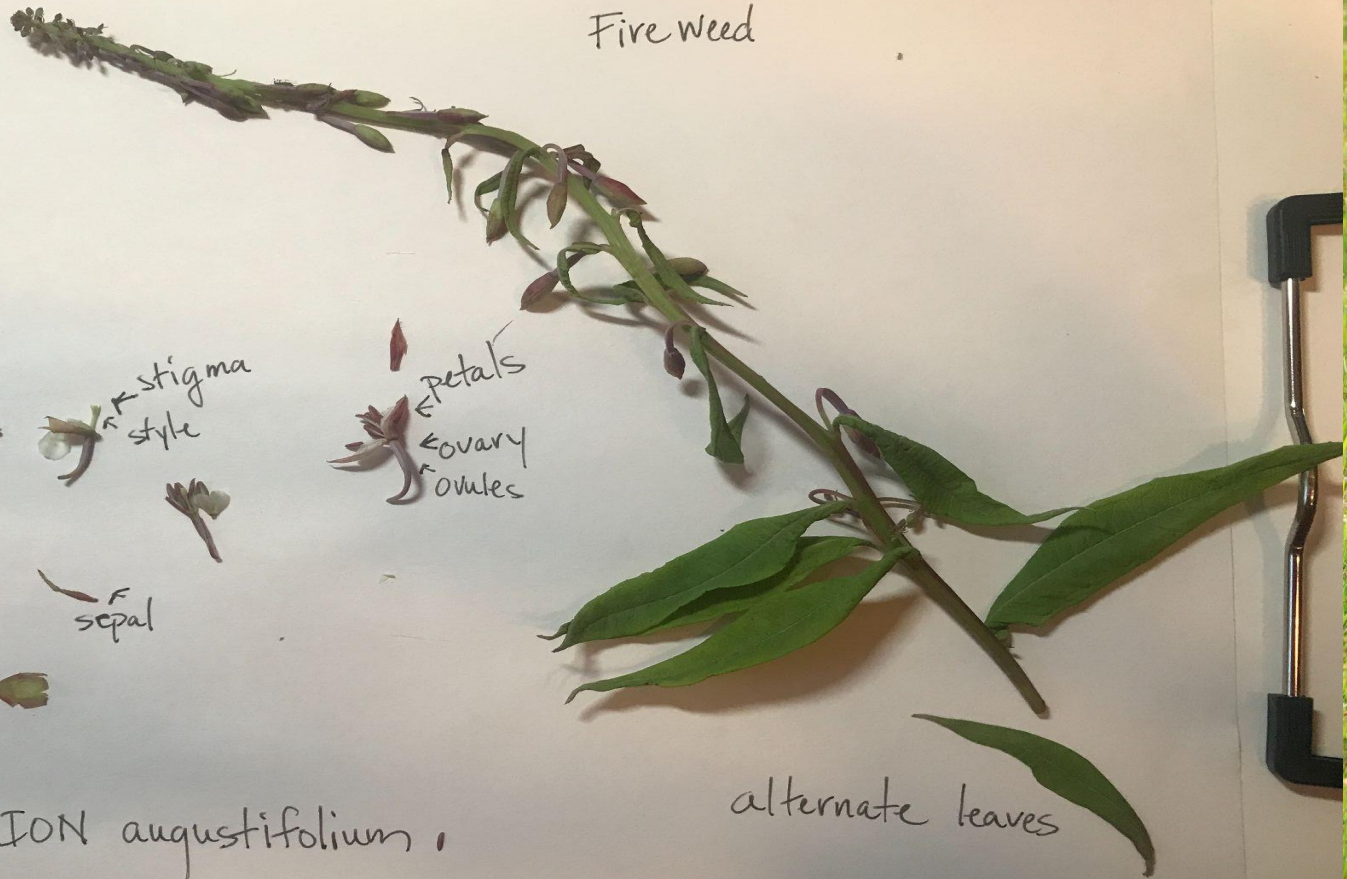


Fire Weed



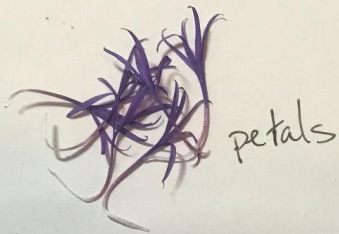
CHAMERION *angustifolium*,

alternate leaves

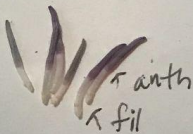
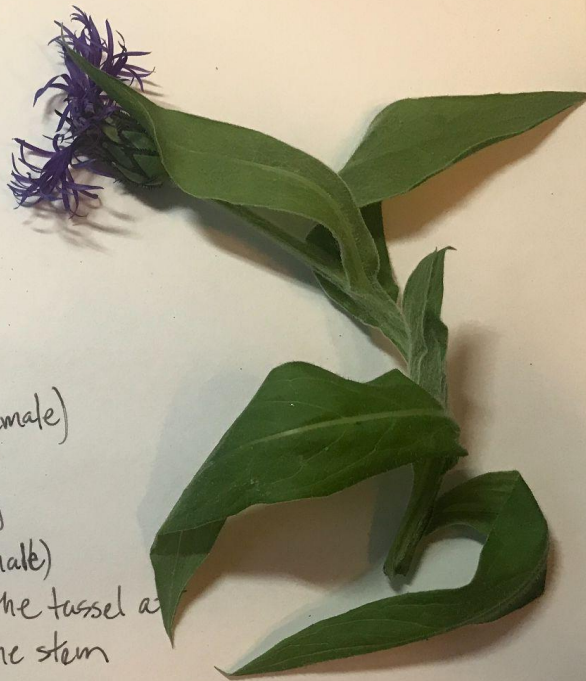


Cyanus montanus

Bachelor's  
Button  
or Cornflower



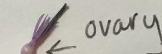
petals



anther  
filament



carpellate (female)



ovary

staminate (male)  
clustered in the tassel at  
the tip of the stem

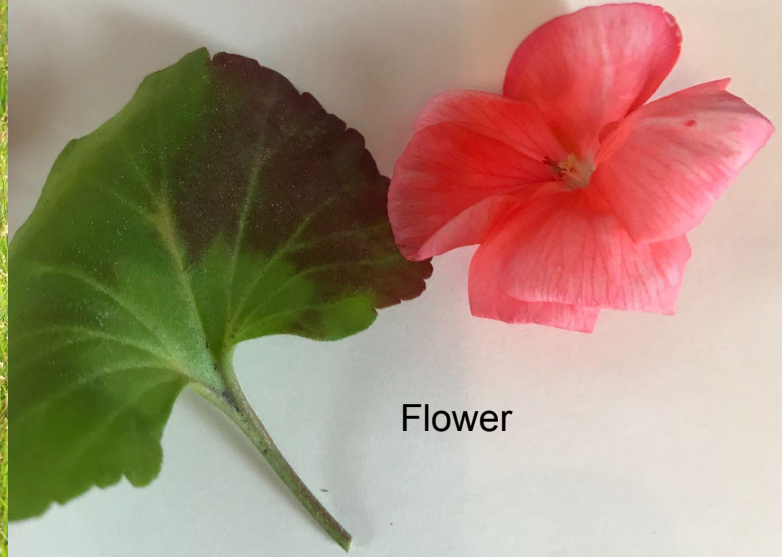
stem

Plant grows 1-3' tall

leaves alternate  
1-4 inches long, lance-linear  
at the tips, stalked & toothless



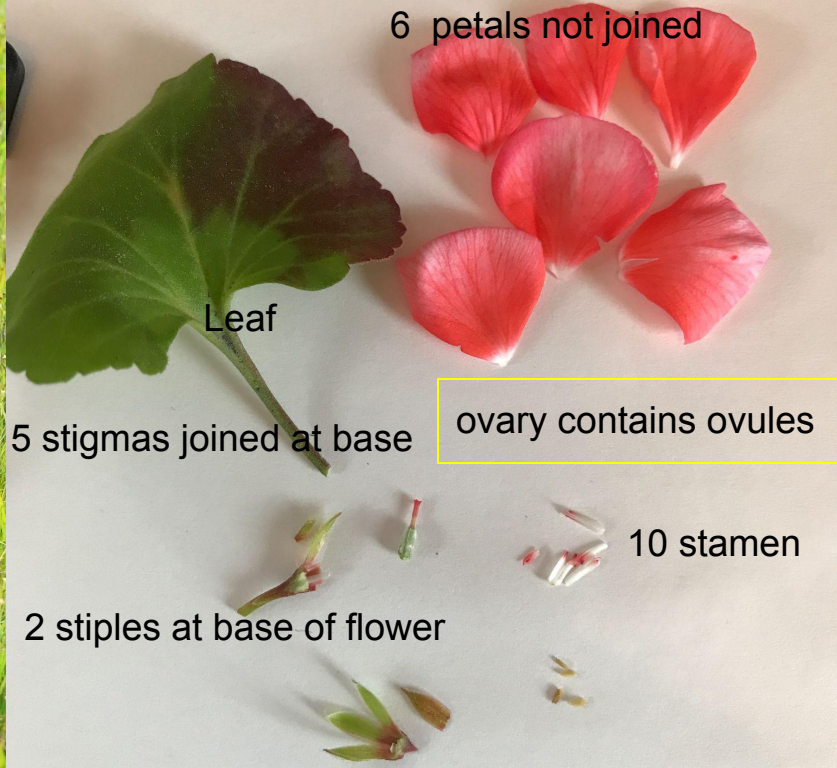
*Geranium robertianum*



Flower

Leaf

*Geranium robertianum*



6 petals not joined

Leaf

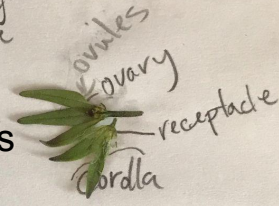
5 stigmas joined at base

ovary contains ovules

10 stamen

2 stipules at base of flower

5 sepals, not joined



parts of fused petal

Garden  
Petunia atkinsiana

Calibrachoa

stigma  
style

anther

sepals

ovules  
ovary

receptacle

corda

stamen

